

IBUR Partial Edentulous CT / CBCT Scan Protocol

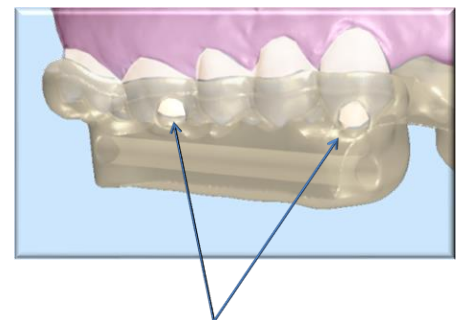
1. **If there is no metal object in the patient's mouth**, take a CT scan of the patient's mouth at 0.3-0.4mm mm slices without a CT appliance (Continue to #3). Make sure to keep the upper and lower occlusion open by using some cotton balls in the posterior areas during CT scanning.

If there are multiple metal objects in the patient's mouth (existing crowns, implants, etc.), you may need an IBUR Imaging Aligner (a CT appliance) at the time of scanning. Although it can be different depending on the scan data quality, location(s) of metal objects and number of remaining teeth, generally speaking, if there are 3 or more crowns in a row, please call IBUR or send the Panorex picture of the patient to IBUR first for evaluation.

If you are asked to order an Imaging Aligner for accuracy, send a dental cast of the patient to IBUR. When you receive the Imaging Aligner, continue to #2.



2. **If you order an Imaging Aligner from IBUR**, check the fit on the patient when you receive it. The CT appliance should snap on to the patient's mouth (This verifies the accuracy of the master dental cast also). Make sure that the Imaging Aligner is properly placed in the patient's mouth, using the windows of the appliance, and take a scan of the patient with the Imaging Aligner in place at 0.3-0.4mm slices.



Properly Positioned
Aligner

3. Send the Multi-file DICOM Files to IBUR (See "Uploading Protocol")

Any questions, please call 248-585-4964.

